

ON AIR Lamp

User's manual



Author	A.Tomassini
Version	1.0.0 - 09/02/2016
Copyright	© 2016 ITEL Elettronica e Telecomunicazioni Snc

Table of contents

Section 1 Description	4
1 List of changes	4
2 Warnings	4
3 Specification	5
4 Front view	5
Section 2 Connections	7
1 RJ45 connector	7
2 Screw terminal block	7
Section 3 Fixing	9
1 Mounting bracket	10

Section

Description

1

1 Description

This product is a on air lamp ideal for studio recording

1.1 List of changes

1.0.0 28/7/2015

first release

1.2 Warnings



Before attempting any operation, please follow the safety instructions contained in the following paragraph.

The producer declines any liability for damage to people or things due to non-compliance, even if partial, of the following indications

- Ensure that the supply voltage corresponds to what is indicated on the apparatus.
 - Ensure that the electrical system is equipped with a ground connection.
 - Use only power sockets and cables with ground connection
 - Disconnect power before attempting any operation inside the device.
 - The power cutting device is the power cord, so this should be easily accessible and the socket must be positioned close to the apparatus.
 - Any operation involving the access to internal parts must be performed only by trained service personnel.
-

1.3 Specification

Operating voltage	12 Vdc
Current	330 mA
Dimensions	383 x 135 x 42 mm (without mounting bracket)
Weight	1kg
Power Supply	AC/DC Single Output Wall Mount Adaptor
Cable length	1500mm
Input Voltage	100-240Vac
Output Voltage	12Vdc
Max Current	1A

1.4 Front view



Section

Connections

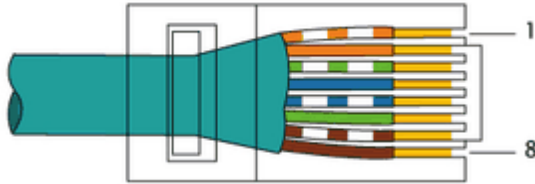
2

2 Connections

This section describes the way of connecting the power cable and the switching command.

2.1 RJ45 connector

The lamp power supply and control switch can be made through a single multi-wire cable (Ethernet) with RJ45 termination.

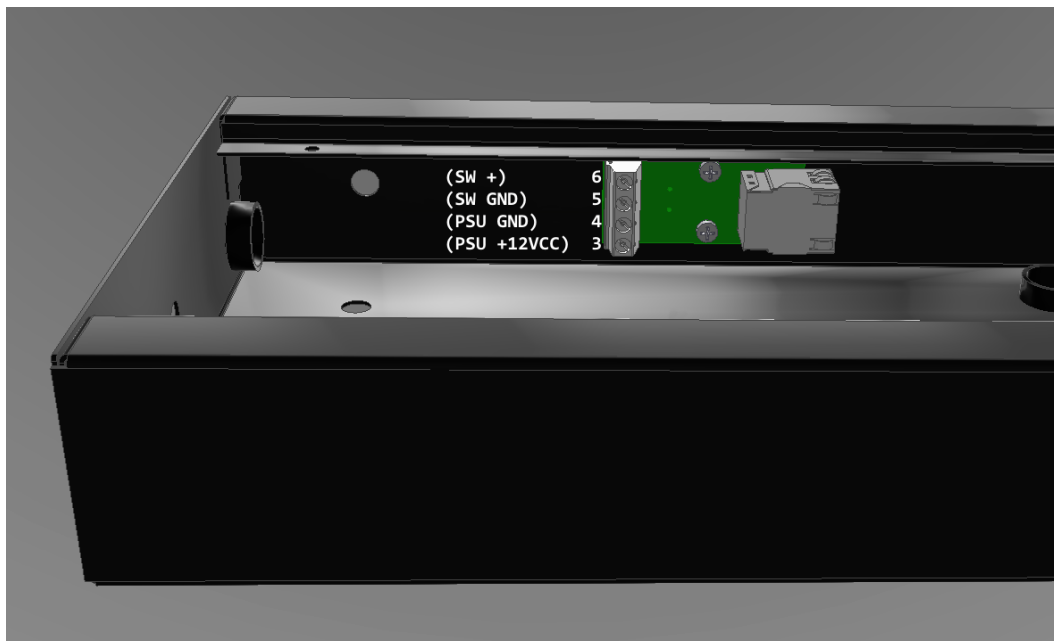


PIN

1 ORANGE-WHITE	NC
2 ORANGE	NC
3 GREEN-WHITE	Power supply +12VCC / 350mA INPUT
4 BLUE	Power supply GND
5 BLUE-WHITE	SWITCH -
6 GREEN	SWITCH +
7 BROWN-WHITE	NC
8 BROWN	NC

2.2 Screw terminal block

The connection of the power and switch cables can also be done via the auxiliary connector with screw terminals.



Section

Fixing

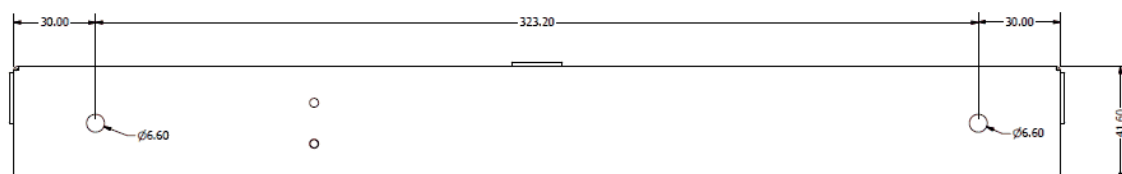
3

3 Fixing

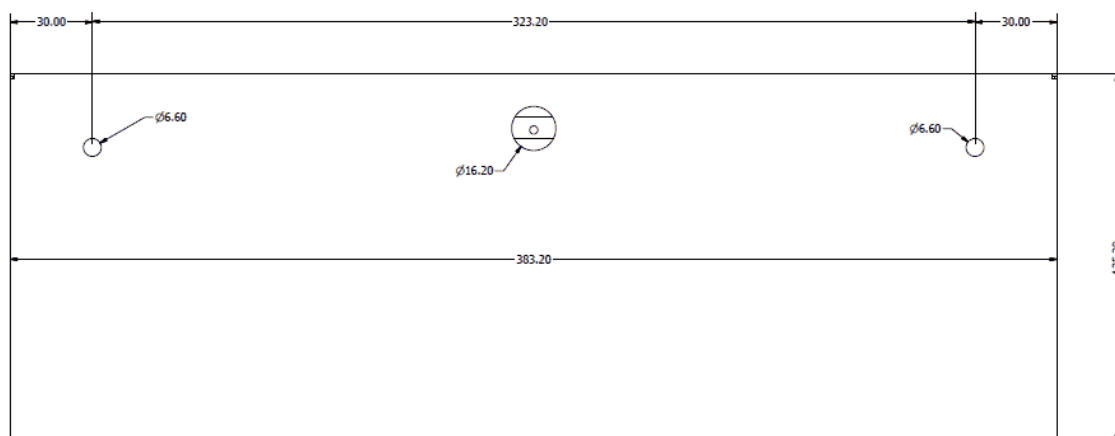
The lamp can be fixed using the two top 6.6mm diameter holes (ceiling mount) or the back 6.6mm diameter holes (wall mount).

The power supply and switching cable can be fitted into the lamp through the back or left/right side 16mm holes.

TOP VIEW



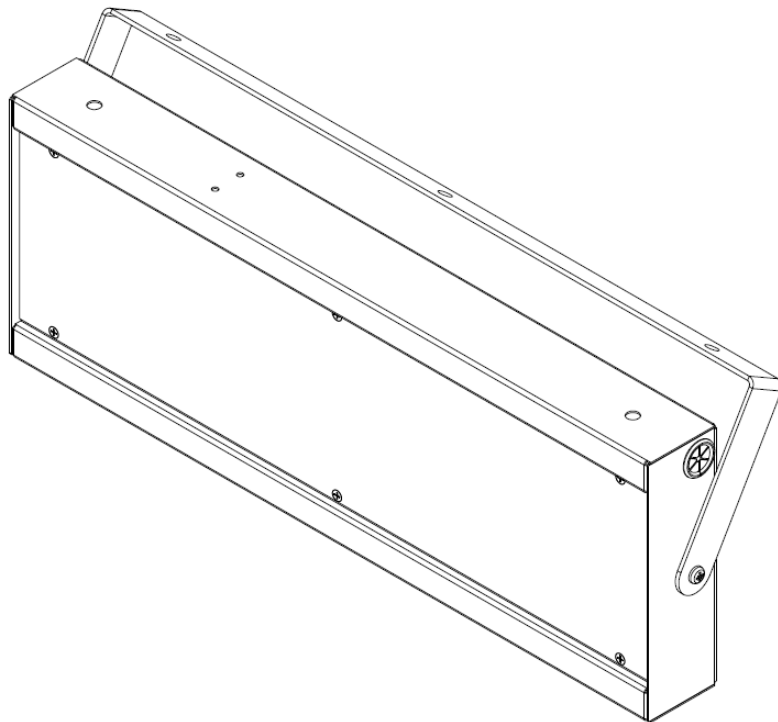
BACK VIEW



3.1 Mounting bracket

To allow mounting of the lamp so oriented or distanced from the mounting surface which is available optional bracket.

OPTIONAL MOUNTING BRACKET



MOUNTING BRACKET ASSEMBLY

